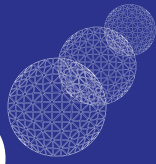


**CUSTOMED**

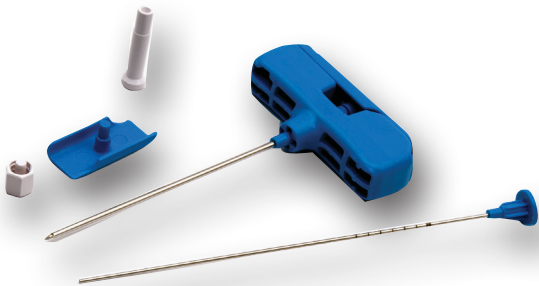


It's all about healing

# Biopsy Needles

# Bone Marrow Biopsy Needles

**Customed J-Max Diamond Tip Needle**  
Packaging: 10/BX



**Technical Characteristics:**

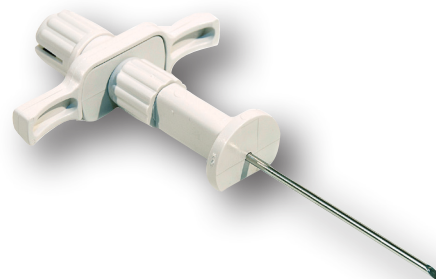
- Ergonomic handle.
- Available in Diamond and Aspiration tip versions.
- Luer Lock connection for syringe.
- Remover guide provided with indicators to facilitate the sample expulsion and monitoring of the sample length during the procedure.
- Provided with a special cap for a safe removal of the sample.
- Sterilized by ETO, shelf life 5 years.

Color	Size	Catagory No.
Dark Green	8G x 100mm	9002200810
Dark Green	8G x 150mm	9002200815
White	11G x 100mm	9002201110
White	11G x 150mm	9002201115

**Customed I-Max Aspiration Tip Needle**  
Packaging: 10/BX

**Technical Characteristics:**

- Suitable to perform bone marrow aspiration and/or Explant/Transplant from both the sternum and the iliac crest.
- Triple sharpened tip cannula to allow a non traumatic, fast and easy penetration into the bone marrow cavity.
- Adjustable needle stop with millimeter scale control.
- Luer Lock connection for syringe.
- Sterilized by ETO, shelf life 5 years.



Color	Size	Catagory No.
White	16G x 50mm	90025011650
White	16G x 60mm	90025011660

Please contact your sales representative or specialist for additional size availabilities.

## Soft Tissue Biopsy Needles

Customed Universal-D for Promag with Coaxial Needle  
Packaging: 10/BX



Color	Size	Catagory No.
Pink	18G x 120mm	9001091812
Pink	18G x 160mm	9001091816
Pink	18G x 250mm	9001091825

**Technical Characteristics:** (aplicable for both Promag and Bard Magnum needles)

- Sharpened cannula for a safe and painless percutaneous insertion and penetration.
- Echogenic treatment for a correct positioning under ultrasound guidance.
- Centimeter markings and optional sliding stopper allow an optimal penetration control.
- Can be used with the CU introducer coaxial needle.
- Sterilized by ETO, shelf life 5 years.

Customed Universal-D for Bard Magnum with Coaxial Needle  
Packaging: 10/BX

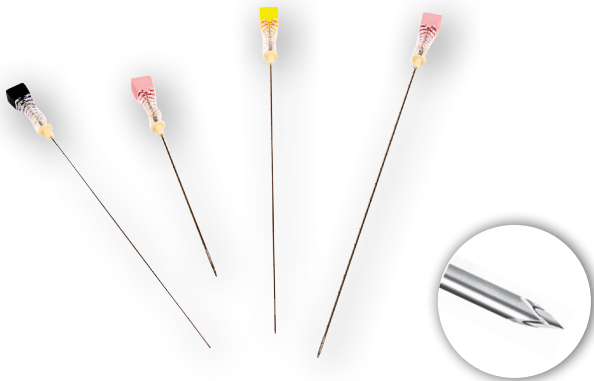


Color	Size	Catagory No.
Pink	18G x 120mm	9000991812
Pink	18G x 160mm	9000991816
Pink	18G x 250mm	9000991825



# Soft Tissue Biopsy Needles

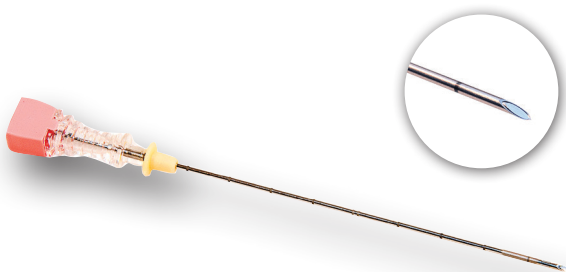
**Customed Franseen Fine Aspiration Needle**  
Packaging: 20/BX



**CHIBA and QUINCKE** needle: Disposable needle used for cytological aspiration and local anaesthesia administration.

**WESTCOTT, FRANSEEN and TURNER** needle: Disposable needle used for cytological/ microhistological biopsy for a more precise diagnosis.

**Customed Chiba Fine Aspiration Needle**  
Packaging: 20/BX



Color	Size	Catagory No.
Pink	18G x 160mm	9001801816
Pink	18G x 200mm	9001801820
Yellow	20G x 160mm	9001802016
Yellow	20G x 200mm	9001802020
Light Green	21G x 160mm	9001802116
Light Green	21G x 200mm	9001802120

**Technical characteristics:**

- Sharpened cannula for a safe and painless insertion and penetration.
- Internal or external echogenic treatment for a correct positioning under ultrasound guidance.
- Centimeter markings and color-coded sliding stopper allow optimal penetration control and fast gauge identification.
- Trasparent Luer Lock connector.
- Sterilized by ETO, shelf life 5 years.

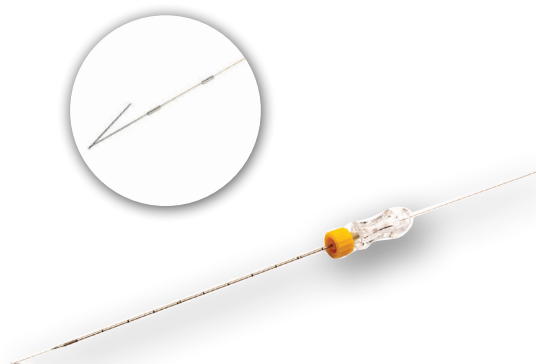
Color	Size	Catagory No.
Pink	18G x 160mm	9001701816
Pink	18G x 200mm	9001701820
Yellow	20G x 160mm	9001702016
Yellow	20G x 200mm	9001702020
Light Green	21G x 160mm	9001702116
Light Green	21G x 200mm	9001702120

## Soft Tissue Biopsy Needles

Customed Pectus-LN Single Hook Wire  
Marked Version  
Packaging: 20/BX

**Technical characteristics:**

- Centimeter markings and color-coded sliding stopper allow optimal penetration control and fast gauge identification.
- Transparent and ergonomic Luer Lock connector for a safe control of the procedure.
- Markers on the wire facilitate identification of the exact position of the hook during the placement.
- Sterilized by ETO, shelf life 5 years.



Size	Category No.
20G x 80mm	9002022008
20G x 120mm	9002022012
20G x 160mm	9002022016
21G x 80mm	9002022108
21G x 120mm	9002022112
21G x 160mm	9002022116

## Biopsy Skin Punch Needles

Customed Epi-Catch Standard Needle  
Packaging: 20/BX



**Technical characteristics:**

- Designed for skin histological diagnosis.
- Ergonomic handle with grip, anti-slip surface.
- Sterilized by ETO, shelf life 5 years.

Size	Category No.
2G x 7.0mm	9002102007
3G x 7.0mm	9002103007
4G x 7.0mm	9002104007
5G x 7.0mm	9002105007

**CUSTOMED**



It's all about healing

10805 Southport Drive, Unit #1  
Orlando, FL 32824  
1.800.981.2679 | 1.407.850.5558  
[www.customedhealing.com](http://www.customedhealing.com)