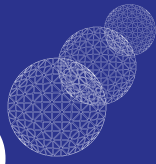


**CUSTOMED**



It's all about healing



**Respiratory Therapy  
& Anesthesia**

# Contents

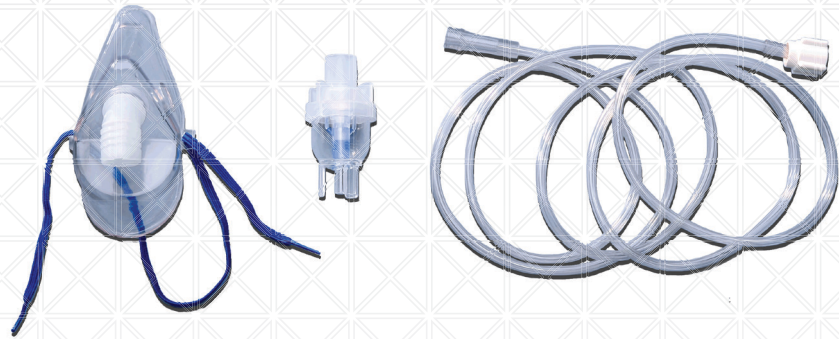
<b>Aerosol Delivery 3</b>	
Nebulizer kit.....	3
Nebulizer Kit with elongated mask .....	3
<b>Airway Management 4-5</b>	
Berman Airway .....	4
Disposable manual resuscitator with mask.....	4
Cuffed Endotracheal Tubes .....	5
Uncuffed Endotracheal Tubes .....	5
<b>Arterial Blood Gas Kits 6</b>	
Blood Gas Kits .....	6
<b>Bronchial Hygiene 7</b>	
Tracheotomy Care Kit.....	7
Suction Catheter Tray.....	7
Mucus Traps .....	7
<b>Continuous Nebulization Treatments 8-9</b>	
IV Heart™ continuous nebulizer.....	8
MiniHeart® Low flow nebulizer with extension set & thayer valve .....	8
UniHeart™ universal nebulizer .....	9
Heart® high output nebulizer .....	9
<b>Humidifiers 10</b>	
Aerosol set (Adult) .....	10
Corrugated aerosol tubing 100' roll .....	10
<b>Oxygen Delivery 11</b>	
Nasal Oxygen Cannulas.....	11
<b>Ventilation &amp; Anesthesia 12</b>	
Bacteria filter.....	12
Basic Ventilator Circuit (Adult).....	12
Transport (adult) breathing circuit 60" .....	12

**Features and Benefits:**

- High Output Nebulizer, particle size production of MMAD = 2.7 microns
- Anti-spill "tee" design
- Leak-proof and secure seal with simple 1/4 turn assembly design
- Very low dead volume (0.7cc)
- High medication bowl capacity (10cc)
- Graduate volume (cc) markings on bowl
- Nebulizes in upright positions or at angles up to 45°

**Nebulizer Kit**

Packaging: 50/CS



**Components:**

- 7' Kink Resistant Tubing
- Mask or "T" Mouthpiece
- Latex-Free
- Non-Sterile

Product Name	Category No.	Item No.
Pediatric Mask w/ Threaded Nut	9001588	712057141588
Adult Mask w/ Threaded Nut	9001589	712057141589
Pediatric Character Mask w/ Threaded Nut	9001699	712057141699
Universal "T" Mouthpiece w/ Threaded Nut	9002248	712057142248
Pediatric Connector Mask w/ Standard Connector	9001817	712057141817

**Nebulizer with Elongated Mask**

Packaging 50/CS



**Components:**

- 7' Star Tubing
- Latex- Free
- 20 ml
- Non-Sterile

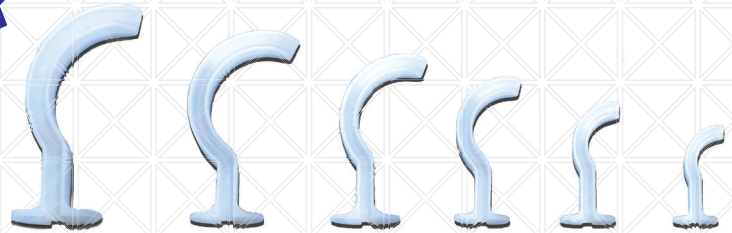
Product Name	Category No.	Item No.
Adult Mask	9001760	712057141760
Pediatric Mask	9001761	712057141761

## Berman Airway

Packaging: 12/BX



Size	Category No.	Item No.
40mm	9002947	7120571411588
50mm	9002948	7120571411589
60mm	9002949	7120571411699
70mm	9002950	7120571412248
80mm	9002951	7120571411817
90mm	9002952	7120571412952
100mm	9002953	7120571412953



## Disposable Manual Resuscitator with Mask



Product Name	Category No.	Item No.	Packaging
Adult Mask	9001804	712057141804	6/CS
Adult Mask w/ PEEP	9001848	712057141848	6/CS
Child Mask	9001805	712057141805	12/CS
Child Mask w/ PEEP	9001849	712057141849	12/CS
Neonatal Mask	9001806	712057141806	12/CS
Neonatal Mask w/ PEEP	9001851	712057141851	12/CS
Infant Mask	9001847	712057141847	12/CS
Infant Mask w/ PEEP	9001850	712057141850	12/CS

### Features & Benefits:

- Lightly textured, highly pliant squeeze bag
- Bias-closed fresh air inlet valve
- Durable up-front oxygen reservoir
- Flexible Neck
- Built-in adjustable PEEP valve
- Two 360° swivels
- Exhalation port
- Oxygen reservoir bleed vent
- Cushion facemask
- Inflation/Deflation valve (mask)
- Integral pressure port (Child & Infant only)
- Selectable high/low pressure pop-off valve (Child & Infant only)

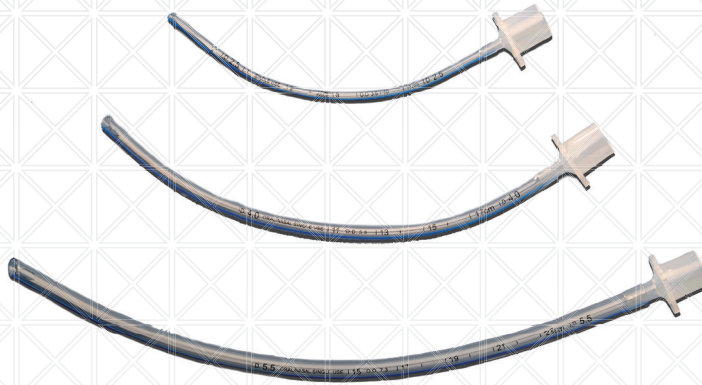
## Features and Benefits:

- Radiopaque line throughout the length of the tube
- Murphy eye (additional opening that has a polished smoothness to ensure atraumatic intubation and extubation)
- Soft rounded, beveled tip to avoid trauma
- Ring marks to help guide intubation
- Kink-resistant
- Standard Connector
- Uncuffed for both oral and nasal intubation and cuffed with valve integrated pilot pressure balloon.



## Uncuffed Endotracheal Tubes

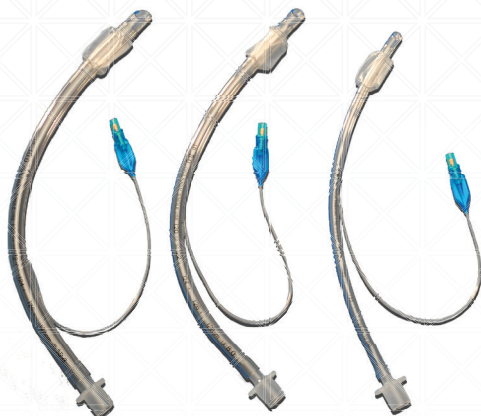
Packaging: 10/BX 10BX/CS



Size	Category No.	Item No.
2.0mm	9002999	712057142999
2.5mm	9003000	712057143000
3.0mm	9003001	712057143001
3.5mm	9003002	712057143002
4.0mm	9003003	712057143003
4.5mm	9003004	712057143004
5.0mm	9003005	712057143005
5.5mm	9003006	712057143006

## CUFFED ENDOTRACHEAL TUBES

Packaging 10/BX, 10BX/CS



Size	Category No.	Item No.
5.0mm	9003007	712057143007
5.5mm	9003008	712057143008
6.0mm	9003009	712057143009
6.5mm	9003010	712057143010
7.0mm	9003011	712057143011
7.5mm	9003012	712057143012
8.0mm	9003013	712057143013
8.5mm	9003014	712057143014
9.0mm	9003015	712057143015
10.0mm	9003016	712057143016

# Arterial Blood Gas Kits



It's all about healing



## Blood Gas Kits

Packaging: 100/CS

All kits include:

- 1 Alcohol Wipe 70% Medium
- 1 Adhesive Bandage 3/4" x 3"
- 1 Biohazard Specimen Bag
- 1 Gauze Sponge 2" x 2" 8 Ply
- 1 Pre-Numbered Label

Category No.	Item No.	Additional Kit Components
9001542	712057141542	<ul style="list-style-type: none"> <li>• 1 23Gx1" Safety Needle</li> <li>• 1 3 ml Luer Slip Syringe with 100 units of Heparin</li> <li>• 1 PVP Iodine Prep Pad Medium</li> </ul>
9001613	712057141613	<ul style="list-style-type: none"> <li>• 1 1 ml Luer Slip Syringe with Filter Device and 25G x 5/8" Pre-Attached Safety Needle with 23.5 I.U. per ml of Dry Lithium Heparin</li> </ul>
9001908	712057141908	<ul style="list-style-type: none"> <li>• 1 1 ml Luer Slip Syringe with Filter Device and 23G x 1" Pre-Attached Safety Needle with 23.5 I.U. per ml of Dry Lithium Heparin</li> </ul>
9002137	712057142137	<ul style="list-style-type: none"> <li>• 1 Hypodermic Needle 23G x 1"</li> <li>• 1 Hypodermic Needle 25G x 5/8"</li> <li>• 1 PVP Iodine Prep Pad Medium</li> <li>• 1 1 ml Luer Slip Syringe with Filter Device and 23.5 I.U. per ml of Dry Lithium Heparin</li> </ul>
9002243	712057142243	<ul style="list-style-type: none"> <li>• 1 ml Syringe</li> <li>• 1 23G x 1" Safety Needle</li> <li>• 1 PVP Iodine Prep Pad Medium</li> </ul>

NOTE: Customed offers ABG Kits in a variety of sizes of needles and syringes to fit your specific needs.

**Features and Benefits:**

This sterile kit provides all the components needed for effective care and management of tracheostomized patients.

**Components:**

- 1 Drain Sponge 4" x 4" 6 Ply
- 2 Exam Gloves (Medium)
- 2 Gauze Sponges 4"x4" 12 Ply
- 1 Towel 3 Ply Poly 13" x 18"
- 1 Trach Brush (Large)
- 1 Trach Tube Holder (Adult)
- 2 Wooden Cotton Applicators 6"

**Tracheostomy Care Kit**

Packaging: 50/CS | Cat No. 900110 | Item No. 712057144780



**Suction Catheter Tray (Sterilized)**

Packaging: 50/CS | Cat No. 900277 | Item No. 712057140277

**Components:**

- 2 Exam Gloves (Large)
- 1 Sodium Chloride 0.9% Irrigation
- 1 Suction Catheter 14fr with vent



**Mucus Traps**

Packaging 50/CS



For the collection of mucus specimen for microbiological examination.

- Graduated Cup
- Latex-Free
- Sterile

Size	Category No.	Item No.
40cc	9002780	712057052780
80cc	9002781	712057052781



## IV Heart™ Continuous Nebulizer

Packaging: 25/CS | Cat. No. 9001925 | Item No. 712057141925

The High-output Extended Aerosol respiratory Therapy (HEART®) system is unsurpassed in delivering continuous nebulization therapy.

### Features & Benefits:

- Efficient Hi-Flo (10 to 15L/min)
- 100 ml reservoir
- Up to 4 hours of nebulization at 10L/min
- Optimal 2-3  $\mu$ m particles
- IV port for easy refill

## MiniHeart® Low Flow Nebulizer with Extension Set & Thayer Valve

Packaging 25/CS | Cat. No 9001926 | Item No. 712057141926



### Features & Benefits:

- Efficient Lo-Flo (1 to 2L/min)
- 30 ml reservoir
- Over 3 hours of nebulization at 2L/min
- Optimal 2-3  $\mu$ m particles
- Ideal for patients on ventilators
- IV port for easy refill
- The thayer valve maintains a closed system improving patient comfort and reducing the risk of contamination entering the ventilator circuit.



## UniHEART™ Universal Nebulizer

Cat. No 9001940 | Item No. 712057141940 | Packaging: 50/CS

### Features and Benefits:

- Lo-Flo Nebulizer (2 to 4L/min)
- 10 ml reservoir
- Over 2 hours of nebulization at 2L/min
- Optimal 2-3  $\mu\text{m}$  particles
- IV port for easy refill
- Ideal for Emergency Department use



## HEART® High Output Nebulizer

Packaging 18/CS | Cat. No. 9001941 | Item No. 712057141941

### Features and Benefits:

- Efficient High Flow (10 to 15L/min)
- 240 ml reservoir
- Up to 8 hours of nebulization at 10L/min
- Optimal 2-3  $\mu\text{m}$  particles
- High aerosol output (up to 50 ml/hr)

### Aerosol Set - Adult

Cat. No. 900130 | Item No. 712057144418 | Packaging: 12/CS

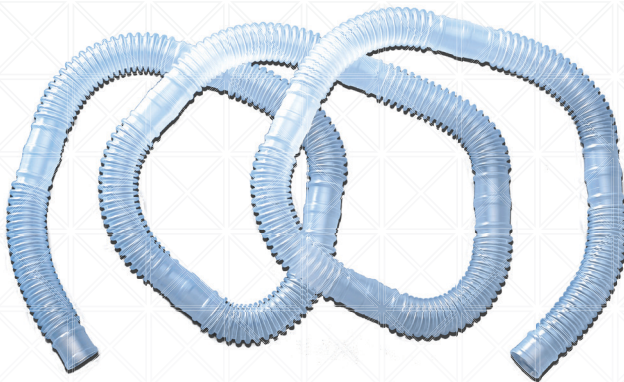
#### Components:

- 1 Adult Mask
- 1 6' Corrugated Tubing
- 1 Pre-filled Sterile Water for Inhalation, Universal Bottle 550mL
- 1 Large Volume Nebulizer Adapter, High Flow (Delivers FIO<sub>2</sub>'s of 36-95% with a minimum total Flow of 43 LPM)
- 1 "T" Adapter, 15mm ID, 22mm OD and 22mm OD



### Corrugated Aerosol Tubing 100' Roll

Cat. No. 9001759 | Item No. 712057141759 | Packaging 1 Roll



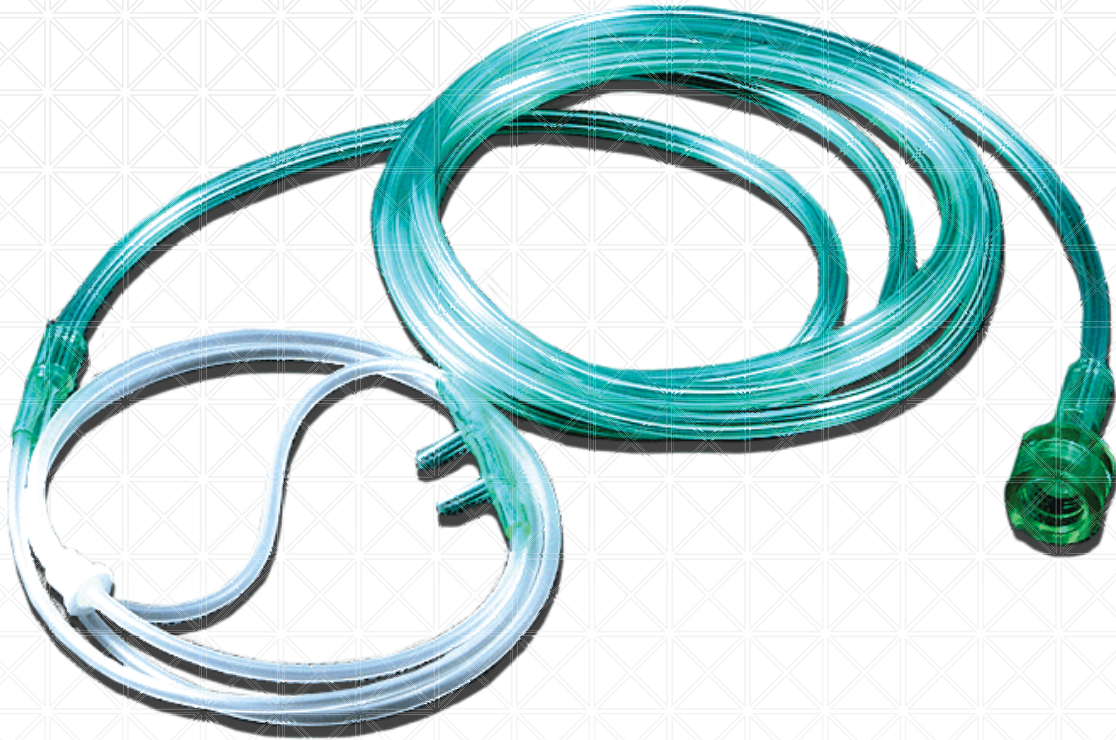
#### Features and Benefits:

- Flexible
- Crush Resistant
- Has easy-it 22mm connector to adapt to a wide variety of respiratory equipment
- Non-Sterile

*NOTE: Complete kit delivery of particulate humidity in the 3 to 5 micron range through the use of a high flow large volume nebulizer.*

**Nasal Oxygen Cannulas**

Packaging: 50/CS



**Components:**

- 7' (84") Tubing

**Features and Benefits:**

- Curved
- Over-the-ear Style
- Latex-Free
- Non-Sterile

Product Name	Category No.	Item No.
Adult Non-Flared Universal Connector	9001757	712057141757
Adult Flared Standard Connector	9001758	712057141758

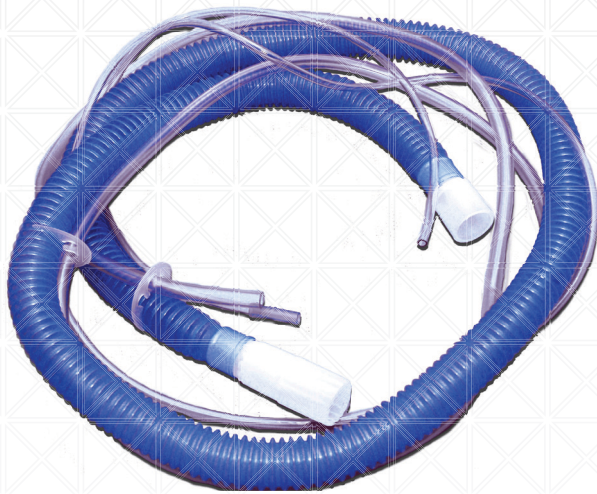
### Bacteria Filter

Cat. No. 9001915 | Item No. 712057141915 | Packaging: 50/CS

*The sensible choice for the prevention of breathing system contamination.*

#### Components:

- Clear Bacterial/Viral Filter, 22mm I.D. x 22mm O.D./ 15mm I.D
- Bacterial/Viral Filtration: Efficiencies in excess of 99.99%
- Resistance to Flow: 0.6cm H<sub>2</sub>O @ 30lpm.
- Dead space: 69 ml



### Transport Adult Breathing Circuit 60"

Cat. No. 9001939 | Item No. 712057801939

Packaging 10/CS

#### Components:

- 60" Corrugated Hose
- Proximal Pressure Sensing Line
- Adult Exhalation Valve Drive Line
- Latex-Free

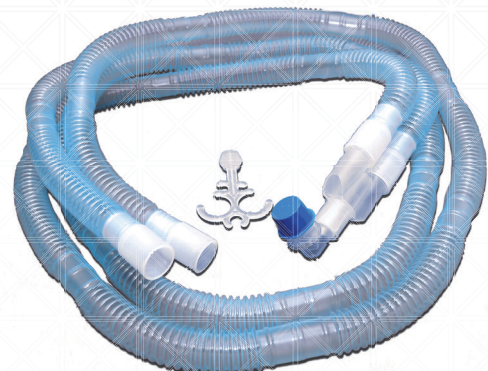
### Basic Ventilator Circuit (Adult)

Cat. No. 9001976 | Item No. 712057141976

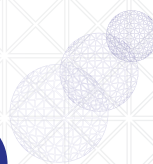
Packaging 20/CS

#### Components:

- (2) 72" Corrugated Hose with cuffs at machine end
- Parallel Wye
- Elbow, clear plain
- Ball Tube Hanger Support



**CUSTOMED**



It's all about healing

10805 Southport Drive, Unit #1  
Orlando, FL 32824  
1.800.981.2679 | 1.407.850.5558  
[www.customedhealing.com](http://www.customedhealing.com)